

End Fixing

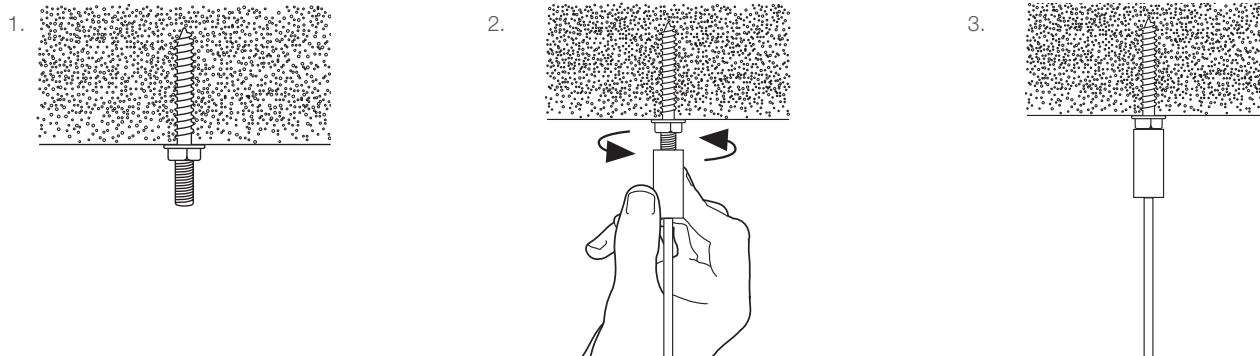
Aesthetic fixing for use with any 6 mm or 8 mm threaded product.

FEATURES / BENEFITS

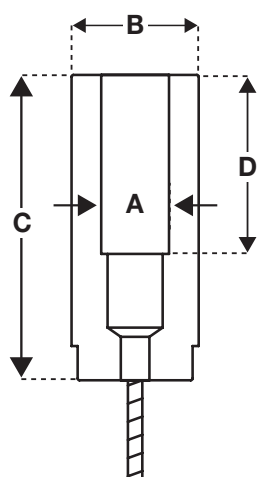
- Available in M6 and M8 sizes
- Ideal for use where services are exposed, such as retail and office environments
- Available for use with No.1, No.2 and No.3 hangers with up to 5:1 safety factor
- Comes as a ready-to-use kit with wire rope and Gripple hanger
- Available in lengths from 1 m to 10 m (other lengths available upon request)
- Independently certified



INSTALLATION



SPECIFICATION



Size	A (mm)	B (mm)	C (mm)	D (mm)
No.1	M6	12	45	26
No.2	M6 & M8	12	45	26
No.3	M8	12	45	26

SUBMITTAL INFORMATION

Safe Working Load:

Refer to hanger load ratings and safe working loads.

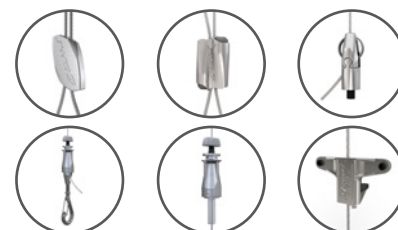
Material:

Steel
Finish – Bright zinc plated

Approvals:

Lloyds certified

AVAILABLE HANGERS



For more options on available hangers please contact us or visit www.gripple.com

IMPORTANT RECOMMENDATIONS

1. Construction materials and conditions vary on different sites. If it is suspected that the base material has insufficient strength to achieve a suitable fixing, contact Gripple Ltd. The responsibility for judgement of base material strength lies with the installer, and not with Gripple Ltd.
2. Not to be used in marine, coastal or corrosive environments.
3. The information and recommendations given herein are believed to be correct at time of writing. The data has been obtained from tests done under laboratory, or other controlled conditions and it is the user's responsibility to use the data given in light of conditions on site, taking account of the intended use of the products concerned.
4. Whilst Gripple Ltd can give general guidance and advice, the nature of Gripple products means that the ultimate responsibility for selecting the correct product for a particular application must lie with the customer.
5. All products must be used, handled and applied in accordance with current product instructions and manufacturers recommendations for use, published by Gripple Ltd.