

Magnetic Pad



End Fixing

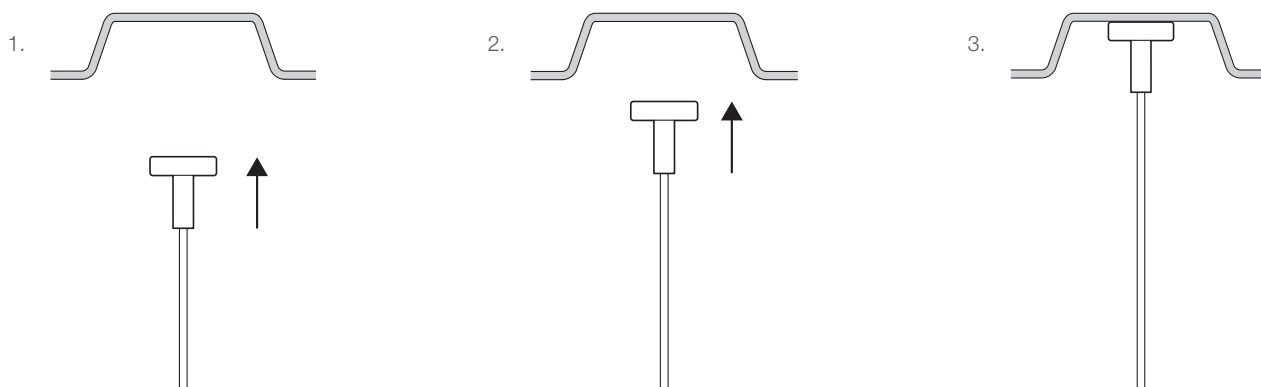
For quick and easy connection to ferrous metal surfaces.

FEATURES / BENEFITS

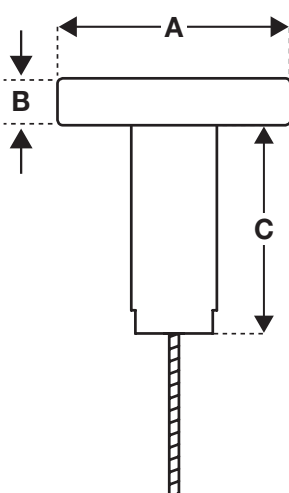
- Ideal for hanging signage and fixing services to magnetic metal surfaces
- Load is affected by the metal thickness and surface condition (painted finish)
- Not for use on aluminium, brass or non-magnetic products
- Available for use with No.1 hanger only, up to 8 kg with up to 2:1 safety factor
- Comes as a ready-to-use kit with wire rope and Gripple hanger
- Available in lengths from 1 m to 10 m (other lengths available upon request)
- Independently certified



INSTALLATION



SPECIFICATION



Size	A (mm)	B (mm)	C (mm)
No.1	25	8	45

SUBMITTAL INFORMATION

Safe Working Load:

Refer to hanger load ratings and safe working loads.

Material:

Steel
Finish - Bright plated zinc

Approvals:

Lloyds certified

AVAILABLE HANGERS



For more options on available hangers please contact us or visit www.gripple.com

IMPORTANT INFORMATION

1. Magnets only attract to ferrous materials eg. steel products including galvanised steel and iron based products.
2. Magnets do not attract aluminium, plastic or brass.
3. Maximum working temperature 80°C.
4. Handle with care, magnets are strong. Wear protective gloves and handle carefully to avoid trapping of skin.
5. Magnets are brittle, do not allow them to 'crash' together as pieces may break off.
6. Magnets can magnetically damage sensitive equipment when brought into close proximity eg. televisions, computer screens and discs, pacemakers, credit cards etc.
7. Magnetic pull strength figures are based on full magnetic flux being absorbed and can vary with the thickness of the material to which the magnet is attached.

PI-MAGNETICPAD-ENG-1541

www.gripple.com

Gripple's policy is one of continuous development and innovation.
We therefore reserve the right to alter specifications, etc. without notice.



Gripple Ltd | The Old West Gun Works | Savile Street East | Sheffield S4 7UQ
Tel 0800 018 4264 Fax 0114 275 1155 Email info@gripple.com