

End Fixing

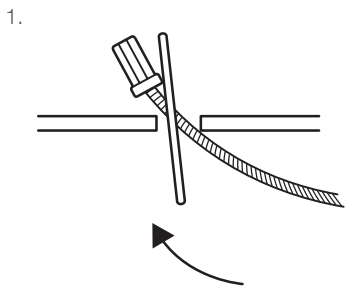
For fastening through profile roof cladding, light fittings and other cavities.

FEATURES / BENEFITS

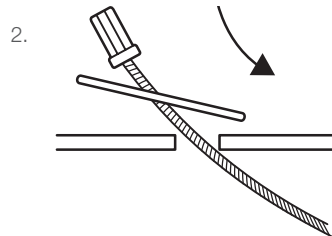
- Ideal when used as a Y-Fit to suspend lighting
- Available for use with No.1, No.2 and No.3 hangers with up to 5:1 safety factor
- Comes as a ready-to-use kit with wire rope and Gripple hanger
- Available in lengths from 1 m to 10 m (other lengths available upon request)
- Independently certified
- Available in Stainless Steel



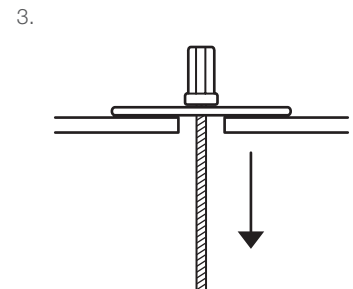
INSTALLATION



Push the toggle plate so that it is parallel to the rope

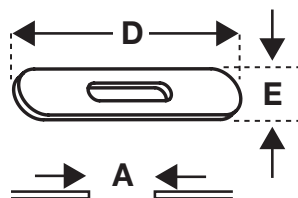
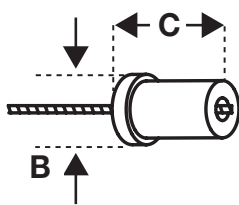


Insert into the cavity. Ensure the toggle plate and end stop are within the cavity



Pull on the wire rope to secure the plate in place

SPECIFICATION



Size	A max. hole size (mm)	B (mm)	C (mm)	D (mm)	E (mm)
No. 1	6	5.9	8	40	5.8
No. 2	8	7.9	12	40	7.8
No. 3	10	9.9	18	40	9.7

SUBMITTAL INFORMATION

Safe Working Load:

Refer to hanger load ratings and safe working loads.

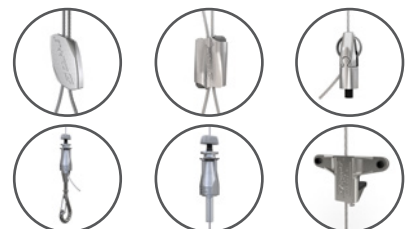
Material:

Toggle plate - Zinc plated steel
End stop - Zinc plated steel

Approvals:

Lloyds certified and third party fire tested

AVAILABLE HANGERS



For more options on available hangers please contact us or visit www.gripple.com

IMPORTANT RECOMMENDATIONS

1. Construction materials and conditions vary on different sites. If it is suspected that the base material has insufficient strength to achieve a suitable fixing, contact Gripple Ltd. The responsibility for judgement of base material strength lies with the installer, and not with Gripple Ltd.
2. Not to be used in marine, coastal or corrosive environments.
3. The information and recommendations given herein are believed to be correct at time of writing. The data has been obtained from tests done under laboratory, or other controlled conditions and it is the user's responsibility to use the data given in light of conditions on site, taking account of the intended use of the products concerned.
4. Whilst Gripple Ltd can give general guidance and advice, the nature of Gripple products means that the ultimate responsibility for selecting the correct product for a particular application must lie with the customer.
5. All products must be used, handled and applied in accordance with current product instructions and manufacturers recommendations for use, published by Gripple Ltd.