

M6, M8 & M10 Adaptors



Accessory

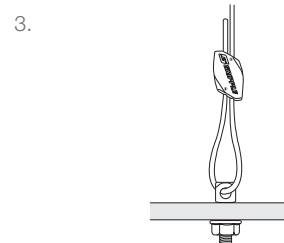
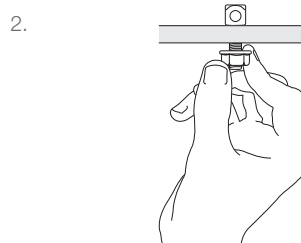
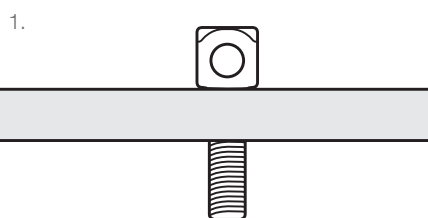
Ideal for fixings to luminaires, drop-in anchors and other products with a 6 mm, 8 mm or 10 mm hole

FEATURES / BENEFITS

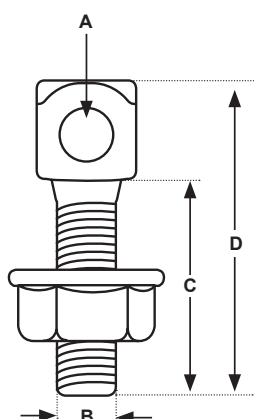
- Available in three sizes; M6 x 20 mm, M8 x 25 mm & M10 x 40 mm.
- Comes with corresponding flange nut
- 5:1 safety factor
- Can be fixed into concrete using a Drop-in Anchor
- M10 also available in stainless steel



INSTALLATION



SPECIFICATION



	A (mm)	B (mm)	C (mm)	D (mm)
M6	3.5	6	20	27
M8	5.5	8	27	37
M10	6	10	40	53

SUBMITTAL INFORMATION

Safe Working Load:

M6 - 90 kg
M8 - 225 kg
M10 - 225 kg
with 5:1 safety factor

Material:

Zinc plated steel
M10 also available in 304 grade stainless steel

IMPORTANT RECOMMENDATIONS

1. Construction materials and conditions vary on different sites. If it is suspected that the base material has insufficient strength to achieve a suitable fixing, contact Gripple Ltd. The responsibility for judgement of base material strength lies with the installer, and not with Gripple Ltd.
2. Not to be used in marine, coastal, swimming pool or corrosive environments.
3. The information and recommendations given herein are believed to be correct at time of writing. The data has been obtained from tests done under laboratory, or other controlled conditions and it is the user's responsibility to use the data given in light of conditions on site, taking account of the intended use of the products concerned.
4. Whilst Gripple Ltd can give general guidance and advice, the nature of Gripple products means that the ultimate responsibility for selecting the correct product for a particular application must lie with the customer.
5. All products must be used, handled and applied in accordance with current product instructions and manufacturers recommendations for use, published by Gripple Ltd.

